



8" LIGHT BAR DUAL ROW

- Input Voltage: 10-30V DC
- Wattage: 36W
(12-3W CREE LED)
- Raw Lumens: 280
- LUX @ 10M: 215
- Color Temperature: 6000K
- Beam Pattern: COMBO: 90° Flood / 8° Spot

HE-MDR8

14" LIGHT BAR DUAL ROW

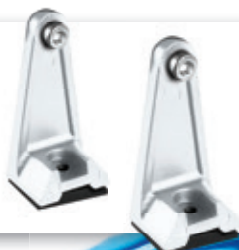
- Input Voltage: 10-30V DC
- Wattage: 72W
(24-3W CREE LED)
- Raw Lumens: 5760
- LUX @ 10M: 466
- Color Temperature: 6000K
- Beam Pattern: COMBO: 90° Flood / 8° Spot

HE-MDR14

14" LIGHT BAR SINGLE ROW

- Input Voltage: 10-30V DC
- Wattage: 60W
(6-10W CREE LED)
- Raw Lumens: 4800
- LUX @ 10M: 450
- Color Temperature: 6000K
- Beam Pattern: COMBO: 120° Flood / 10° Spot

HE-MSR14



UNIVERSAL MOUNT

- Included with Light Bars
- Mount Anywhere
- Stainless Steel Hardware Included
- Heavy Duty Rubber Foot Reduces Vibration
- Die-cast Aluminum Construction

CONSTRUCTION

- Die-cast Aluminum Housing
- White Coating with UV Inhibitors
- Gore™ Membrane
- Integrated-Epoxy Encapsulated Electronics



3" CUBE LIGHT

4 LED

- Input Voltage: 10-30V DC
- Wattage: 12W
(4-3W CREE LED)
- Raw Lumens: 960
- LUX @ 10M: 17
- Color Temperature: 6000K
- Beam Pattern: 90° Flood

HE-MCL2 Each

HE-MCL22PK Pair



3" CUBE LIGHT

6 LED

- Input Voltage: 10-30V DC
- Wattage: 18W
(6-3W CREE LED)
- Raw Lumens: 1440
- LUX @ 10M: 18
- Color Temperature: 6000K
- Beam Pattern: 90° Flood

HE-MCL3 Each

HE-MCL32PK Pair

IP68
RATED



2" CUBE LIGHT

1 LED

- Input Voltage: 10-30V DC
- Wattage: 10W
(1-10W CREE LED)

- Raw Lumens: 600
- LUX @ 10M: 12
- Color Temperature: 6000K
- Beam Pattern: 40° Flood

HE-MCL1 Each

**3" FLUSH MOUNT****4 LED**

- Input Voltage: 10-30V DC
- Wattage: 12W (4-3W CREE LED)
- Raw Lumens: 960
- LUX @ 10M: 17
- Color Temperature: 6000K
- Beam Pattern: 90° Flood

HE-MFMC12 Each**3" FLUSH MOUNT****6 LED**

- Input Voltage: 10-30V DC
- Wattage: 18W (6-3W CREE LED)
- Raw Lumens: 1440
- LUX @ 10M: 18
- Color Temperature: 6000K
- Beam Pattern: 90° Flood

HE-MFMC13 Each

WHITE

IP68
RATED**AUX LIGHTING POD****1.5 x 3" SURFACE MOUNT 3 LED**

- Input Voltage: 10-30V DC
- White: (3-5W CREE LEDs) - Wattage: 15W
- Color: (3-3W CREE LEDs) - Wattage: 9W
- Raw Lumens: 1200/720
- Beam Pattern: 120° Flood

HE-ML1

WHITE

HE-ML1A

AMBER

HE-ML1B

BLUE

HE-ML1G

GREEN

HE-ML1R

RED



WHITE

IP68
RATED**AUX LIGHTING POD****1.5 x 3" FLUSH MOUNT 3 LED**

- Input Voltage: 10-30V DC
- White: (3-5W CREE LEDs) - Wattage: 15W
- Color: (3-3W CREE LEDs) - Wattage: 9W
- Raw Lumens: 1200/720
- Beam Pattern: 120° Flood

HE-FMML1

WHITE

HE-FMML1A

AMBER

HE-FMML1B

BLUE

HE-FMML1G

GREEN

HE-FMML1R

RED



RED



BLUE



AMBER



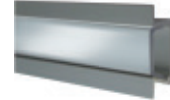
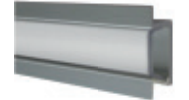
GREEN

**RGB STRIP LED LIGHT KIT****5 METER 5050 RGB LEDS**

- 5 Meters (16.4 feet) RGB 5050 LED strip
- 5050 SMD LEDs at 60 LEDs per meter
- One 24-key IR Remote & RGB controller
- 3 amp power supply

H-RGB5MRK2**ALUMINUM TRACK FOR STRIP LED LIGHTS****3 FT SILVER ANODIZED**

- Aluminum surface and flush mount track available in both clear and frosted covers for use with LED strip lights
- Provides decorative look and secure place to attach your LED strip lights
- Flush mount requires a 5/8" wide 1/4" deep opening
- Hardware included

**HE-ATCL** Clear Surface Mount**HE-ATFL** Frosted Surface Mount**HE-AFMTCL** Clear Flush Mount**HE-AFMTFL** Frosted Flush Mount



MARINE RADIO HOUSING

Pre-Wired Surface Mount

- White molded UV-resistant polycarbonate
- Smoke tinted door - spring-loaded with retention hinge
- Pre-wired for easy installation
- Stainless steel mounting hardware included
- Housing only - radio not included

99-9006



MARINE RADIO COVER

With Transparent Smoke Tinted Door

- Black or white finished base
- Magnetic latch - No pushbuttons to break or stick
- Magnetic seal held in place with 3M adhesive
- Retention hinged so the door will stay open
- No other Marine cover uses this style of hinge
- Universal design accommodates most DIN head units
- High-Temp and UV resistant polycarbonate construction
- Stainless steel mounting hardware included

99-9003W White Base

99-9003B Black Base



MARINE RADIO COVER

With Transparent Door

- Black or white finished base
- Positive spring-loaded detent lock
- Longer life, heavy-duty, low-friction hinges
- Dual spring support while cover is open
- Accu-view tinted cover

99-9005 White Base

99-9005B Black Base



MARINE AMPLIFIED GLASS MOUNT ANTENNA

- Deluxe high performance windshield or glass mount amplified antenna
- Mount on windshield behind mirror or on fixed side/back windows - 14-9/16" (37cm) width
- Gain FM - 10db/12db, AM - 5db/2db
- 95" cable

44-MAUA200

WHITE MARINE RUBBER ANTENNA

- Side/top mount for 1" (25mm) hole split ball
- 14" (36cm) removable white conductive rubber mast
- 54" (137cm) cable

44-MAUS07R





BLUETOOTH® AUDIO RECEIVERS

- Remote turn on comes on when streaming media
- Water resistant
- Upgrade existing non-bluetooth radio
- Automatically reconnects with the last bluetooth device
- RCA output

IBR64 Water Resistant Design

- Aux input
- Water resistant
- Remote turn on comes on when streaming media
- Independent volume and track controls

IBR65 Flush Mount



12V POWER SOCKET

- Water Resistant
- Flush Mount
- .250" power and ground lugs on back
- Use with optional mounts IBR59, IBR60 and IBR61

IBR58

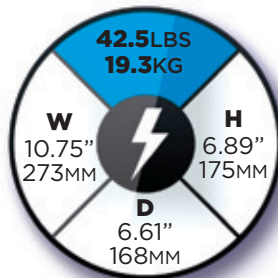


12V MARINE BATTERY AGM TECHNOLOGY (ABSORBED GLASS MAT)

785 CRANK AMPS
120 MIN RESERVE
55 AMP HOURS

- 12V Marine grade battery
- Threaded & standard posts
- Can be discharged and recharged 100's of times

SK-MBT-55

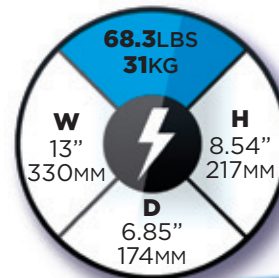


12V MARINE BATTERY AGM TECHNOLOGY (ABSORBED GLASS MAT)

800 CRANK AMPS
190 MIN RESERVE
100 AMP HOURS

- 12V Marine grade battery
- Threaded & standard posts
- Can be discharged and recharged 100's of times

SK-MBT-100





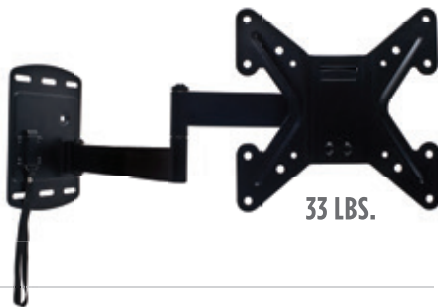
40 LBS.

RV/BOAT TV MOUNT

- Locks into flush position for safe transport on RV's and Boats/Yachts
- VESA COMPLIANT:
100x100mm - 200x200mm
- WEIGHT CAPACITY: 40 lbs.
- Sturdy steel construction

FML22**RV/BOAT TV MOUNT**

- Locks into flush position for safe transport on RV's and Boats/Yachts
- VESA COMPLIANT:
100x100mm - 200x200mm
- WEIGHT CAPACITY: 33 lbs.
- Sturdy steel construction

FML22-R2

33 LBS.

**CIRCUIT BREAKERS**

- USA Cooper Bussman
- Manual reset

CB50MR 50 AMP**CB80MR** 80 AMP**CB100MR** 100 AMP**CB135MR** 135 AMP**CB150MR** 150 AMP**FUSES**

Complete line of
nickel plated fuses

AGU 40-60 AMP**MANL** 30-150 AMP**ANL** 80-300 AMP**ATC SHORT BASE FUSE PANEL**

- USA Cooper Bussman
- 30A 6-Position

15600-06-20**ATC LONG BASE FUSE PANEL**

- USA Cooper Bussman
- 30A 6-Position
- Fuse and Ground distribution

15600-06-21**HEAT SHRINK TUBING KIT**

Tubing is halogen-free, flexible, flame retardant, heat-shrinkable made from a special blend of cross-linked polyolefin. This tubing is free of Pb,Cd, Hg,Cr+6, PBB, PBDE and CB-HFT, and can be used in any enclosed area where a flame-retardant, halogen-free environment is required.

- Adhesive liner with 33% shrink
- Typical applications include strain relief of wire connectors
- Electrically insulates components, terminals and wire splices
- Resistant to common fluids and solvents
- Shrink temperature rating of 90°C (194°F)
- UL, cUL, and RoHS compliant

IBHST62AB 62 Assorted Black Tubes



AMP INSTALLATION KITS

- Meets CEA and ANSI specification for wire gauge
- Full virgin copper construction
- High strand count for maximum flexibility
- BC-5W2 marine compliant RCA, speaker, power and ground wire
- Compact brass fusing and distribution

1/0 AWG AMP KIT

5200 Watts with RCA Cable

4 AWG AMP KIT

2100 Watts with RCA Cable

8 AWG AMP KIT

800 Watts with RCA Cable

POWER WIRE SPOOLS

- Meets CEA and ANSI specs
- Full virgin copper construction
- High strand count for max flex
- PVC blended jacket
- BC-5W2 marine compliant
- Available in 25-250 ft



AVAILABLE IN 8, 4 & 1/0 AWG Matte Pearl, Matte Gray and Matte Red

RCA AUDIO CABLES

- Dual twist for improved noise rejection
- Ultra-flexible PVC blended jacket
- Patented high-tolerance, compact machined metal end
- Quad split tip for maximum contact area
- Made with BC-5W2 Marine grade cable
- Packaged in high-end retail box

2 CHANNEL 1.5 - 20 FT, Y-Adapters

4 CHANNEL 17 FT



VIDEO CABLES

- True 75-ohm video cable
- Ultra-flexible PVC blended jacket
- Patented high-tolerance, compact machined metal end
- Quad split tip for maximum contact area
- Made with BC-5W2 Marine grade cable
- Packaged in high-end retail box

1 CHANNEL 3 - 20 FT



3.5MM TO RCA AUDIO

- Dual twist for improved noise rejection
- Ultra-flexible PVC blended jacket
- Patented high-tolerance, compact machined metal end
- Quad split tip for maximum contact area
- Packaged in high-end retail box

2 CHANNEL 6 FT





www.facebook.com/MetraElectronics



www.twitter.com/MetraElectronic



www.youtube.com/user/MetraElectronics



www.instagram.com/MetraElectronics



Order Anytime Day or Night at www.MetraDealer.com



Download all our New Catalogs at www.MetraOnline.com



MetraOnline.com

ORDERS: 800.221.0932



CORPORATE HEADQUARTERS:

Metra Electronics Corporation
460 Walker Street
Holly Hill, FL 32117-2699

© Copyright 2017 - Metra Electronics Corporation

US OPERATIONS

Corporate Sales / Manufacturing
460 Walker Street
Holly Hill, FL 32117-2699

Local: 386.257.1186

National: 800.221.0932

National Fax: 800.647.8091
3 feet on center-

WAREHOUSE OPERATIONS

Daytona Beach, FL
Dallas, TX
Freehold, NJ
Lexington, KY
Fresno, CA
Long Beach, CA

OEM OPERATIONS

METRA DETROIT • St. Claire Shores, MI

OVERSEAS OPERATIONS

Taipei, Taiwan R.O.C. • Hong Kong



MARINEBRO-17

Scale 1:40,000